



LITHOSPHERE®

PÂTISSERIE ♦ BOULANGERIE ♦ RESTAURANT ♦ BANQUETS

CORE - THE COFFEE SHOP

# BEVERAGE

# M E N U

For Inquiries: +91 7069188818 / +91 70691 44424

[inquiries@lithosphereuc.com](mailto:inquiries@lithosphereuc.com)

Off SG Highway, B/H Rajpath Club, Ahmedabad 380054

 [lithosphereuc.com](http://lithosphereuc.com)

 [lithosphere\\_uc](https://www.instagram.com/lithosphere_uc)

# Hot Coffee



**ESPRESSO** 135

Concentrated portion of coffee prepared under pressure with water

**LATTE** 185

Espresso with equal parts of hot milk & steamed microfoam

**CAPPUCCINO** 185

Espresso topped with milk and a thin layer of microfoam

**AMERICANO** 160

Espresso with hot water

**MACCHIATO** 160

Splash of milk added to your espresso shot

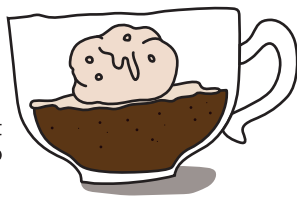
**CAFE MOCHA** 195

Flavorful blend of chocolate, milk, and espresso

\*Flavor Add On (Irish/Caramel/Hazelnut) 50

**Affogato** 195

Vanilla Ice Cream "drowned" with a shot of hot espresso



**MASALA CHAI** 99

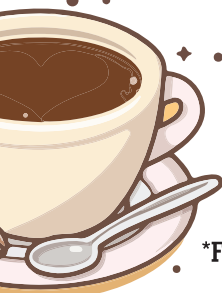


**LEMONADE** 185

**Cold Coco** 200



# Hot Chocolate



**THE CLASSIC HOUSE BLEND** 250

**70% DARK** 280

\*Flavor Add On (Irish/Caramel/Hazelnut) 50

**Healthy Juice** 260

Watermelon, Pineapple, Black Grapes, Kiwi, Pomegranate, Orange



**Fruit Shake** 300

Banana, Chikoo, Strawberry, Avacado



**THE ORIGINAL** 225

**GINGER & GILOY** 225

**KHUS & GYMNEMA** 225

**Green Tea** 160

Served with Honey



**CLASSIC LEMON GINGER**

\*All above rates are in INR, GST as applicable

**Iced Tea** 175



**LEMON / PEACH / LYCHEE GINGER**  
**GREEN APPLE / WATERMELON**  
**BASIL / ORANGE**



**Iced Coffee** 250

**ICED LATTE / ICED MOCHA / ICED AMERICANO**

\*Add on Milk 50

\*Flavor Add On (Irish/Caramel/Hazelnut) 50

**Ice Cream Float** 250

**COKE / SPRITE / THUMS UP**

# Mocktails



**CLASSIC** 250

Pina Colada  
Classic Guava Chilly  
Blue Breeze  
Lychee Coconut Mocker

**MOJITO** 250

Classic, Orange, Watermelon, Basil, Strawberry

**COOLER** 250

Peach & Elder Flower, Orange, Kiwi, Pineapple

**CLASSIC SANGRIA** 290



# Frappes



**CLASSIC COLD COFFEE** 250

**ROASTED HAZELNUT COLD COFFEE** 290

**IRISH FRAPPE** 290

**TIRAMISU FRAPPE** 290

\*Add a Scoop of Ice Cream 50

**Milkshakes** 300

**CHOCOLATE / FUDGE BROWNIE**

**SALTED CARAMEL / BLACK FOREST**

**STRAWBERRY / VANILLA / NUTELLA**

\*Add a Scoop of Ice Cream 50



**WATER BOTTLE**

Schweppes / Qua / Aava

**MRP**

**AERATED DRINKS**

Coke / Sprite / Thumsup

**MRP**

**BEER (NON ALCOHOLIC)**

Hoegaarden / Kingfisher / Budweiser

**175**

**WINE (NON ALCOHOLIC)**

Zampa / Zinfandel / Cabernet Sauvignon / Chenin Blanc

**1200**

\*All above rates are in INR, GST as applicable